

## Features

- Smallest design for Nvidia TX2/TX1
- Specifically designed for high performance and low-power envelope AI computing
- Connect with CSI adapter can support up to 6 camera (6 x2Lanes or 3x 4Lane)
- Extended temperature range -40°C to 85°C
- Suitable for general robotics, Drone, UAV, industrial inspection, medical imaging and deep learning

## Specifications

### Dimension

- Carrier 87 x 70mm

### Support Module

- Nvidia Jetson TX2 Module (87 x 50mm)
- Nvidia Jetson TX1 Module (87 x 50mm)

### Carrier I/O Interface

- 1x HDMI Type A
- 1x RJ-45 for GbE
- 2x USB3.0 Type A
- 1x USB2.0 Micro AB
- 1x mPCIe(Compatible with mSATA)
- 1x RS-232
- 5x GPIO
- 1x I2C
- 2x CAN BUS<sup>1</sup>
- 1x Front Panel(Power/Reset/Recovery/Sleep)
- 1x DC-in 9~19V (2 Pin Euroblock)
- 1x MIPI CSI-II connector( 120pin)

### Operating Temperature

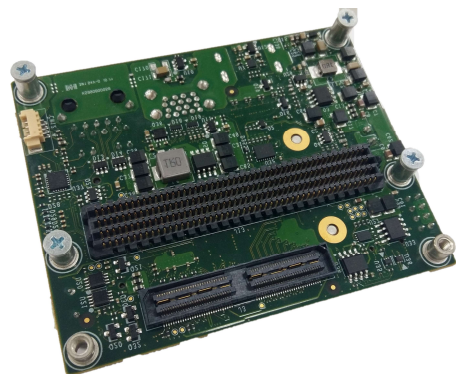
- -40°C ~ +85°C (Standard temperature)

### Operating Humidity

- 10% ~ 90%

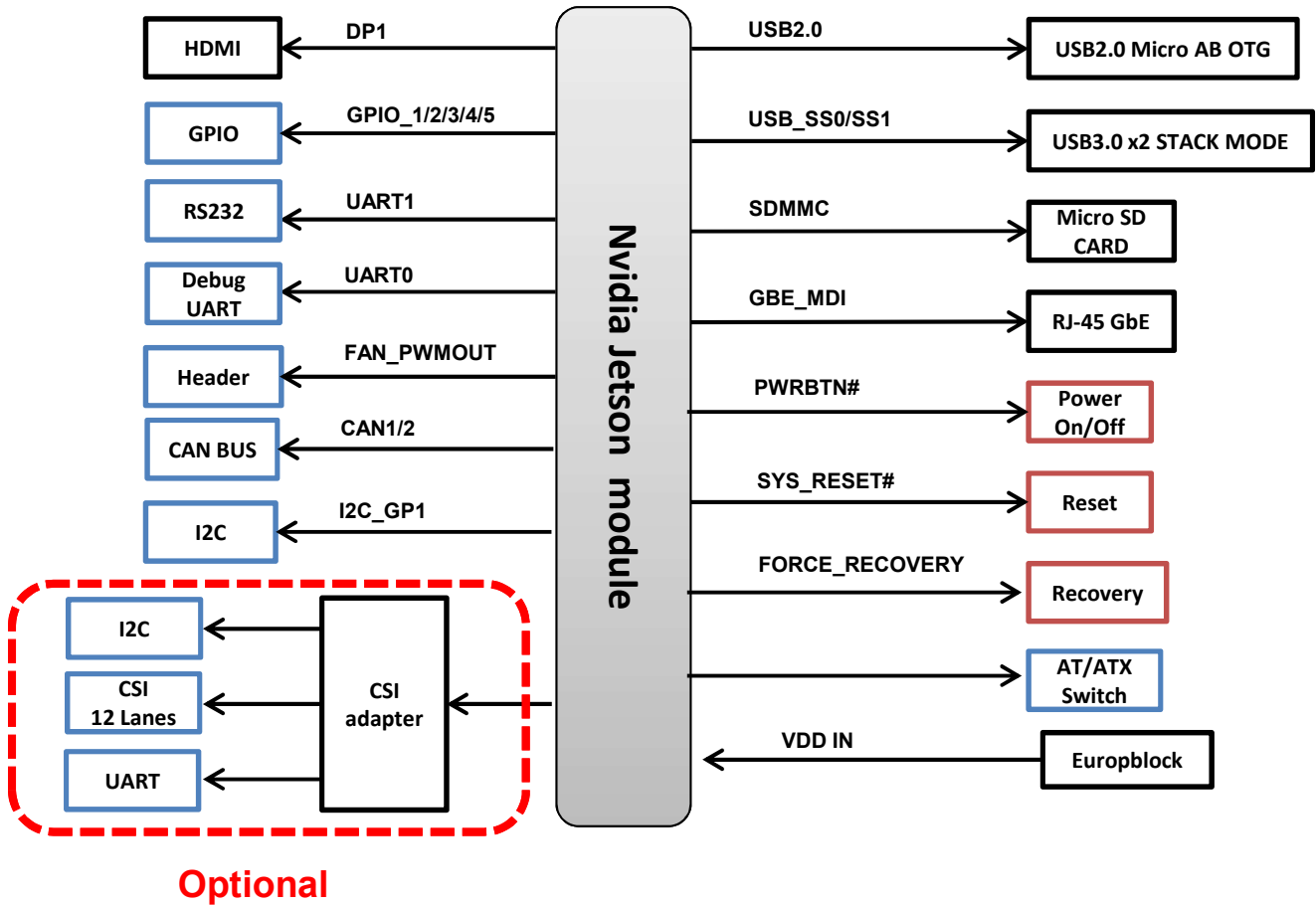
### Storage Temperature

- -40°C ~ +125°C

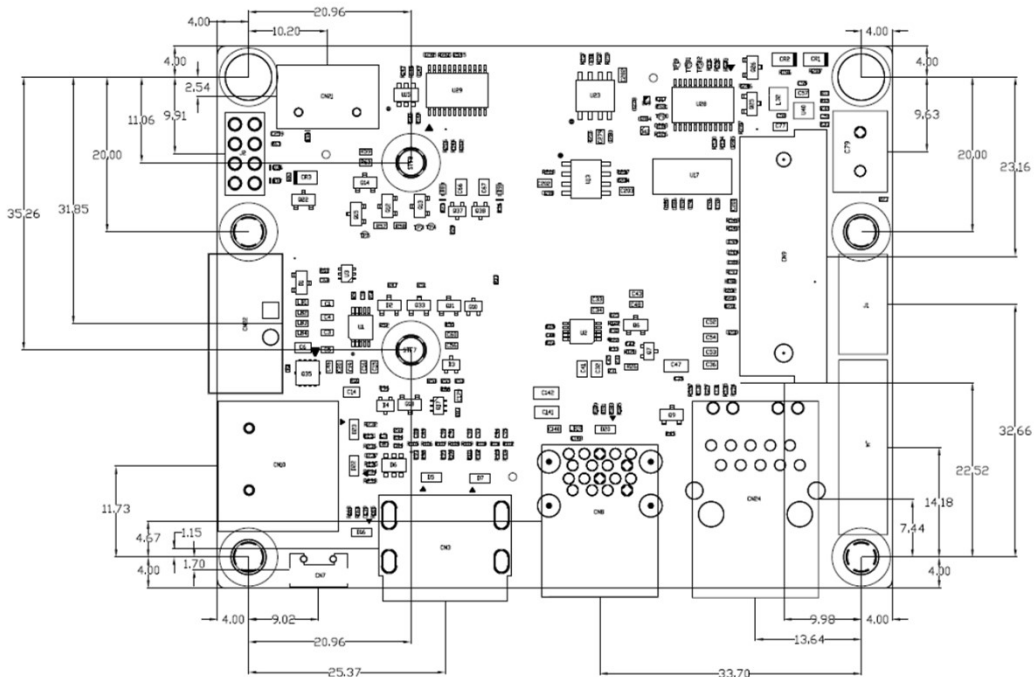


1. CAN BUS function only work on TX2. TX1 not support

## Block Diagram



## Mechanical



## Ordering Information

Product name	Description
AN310-STD-AN00	AN310 Carrier, Standard temp -40°C to +85°C
AN310-TX1-FN01	AN310 Carrier with Nvidia Jetson TX1 module, Standard temp -25°C to +80°C
AN310-TX1-FN02	AN310 + TX1 Module + FAN + Cable Kit + Power Adapter and Power Cord -25°C to +80°C
AN310-TX2-FN01	AN310 Carrier with Nvidia Jetson TX2 module, Standard temp -25°C to +80°C
AN310-TX2-FN02	AN310 + TX2 Module + FAN + Cable Kit + Power Adapter and Power Cord -25°C to +80°C

## Accessory (Optional)

MCAC-00000000CA100	CA-A01 6x CSI-2 Camera Carrier Board with FPC
7W9000000040	AN310 Cable kit(CAN bus / UART / RS232 / Front panel / GPIO / I2C)
9Z1253232020	TX1/TX2 Active Heat Sink
9Z2XX4141010	TX1/TX2 Passive Heat Sink
7W8000000040	US Power Cord SVT 18AWG Cable 1800mm Black 105 °C
7W8000000050	EU Power Cord H05VV-F 0.75mm2/3G SL-6+SL-3 Cable 1800mm Black
9Z3BC0000020	100-240V 60W 12V 5A Adapter

Passive Heat Sink



Active Heat Sink



Cable Kit



6 x MIPI CSI-II Camera Board



12V/5A 60W Adapter

